

**Protege GX and Salto Service
Dependency
Application Note**

ICT[®]eSecurity.

The specifications and descriptions of products and services contained in this document were correct at the time of printing. Integrated Control Technology Limited reserves the right to change specifications or withdraw products without notice. No part of this document may be reproduced, photocopied, or transmitted in any form or by any means (electronic or mechanical), for any purpose, without the express written permission of Integrated Control Technology Limited. Designed and manufactured by Integrated Control Technology Limited. Protege® and the Protege® Logo are registered trademarks of Integrated Control Technology Limited. All other brand or product names are trademarks or registered trademarks of their respective holders.

Copyright © Integrated Control Technology Limited 2003-2014. All rights reserved.

Publication Date: September 2014

Contents

Configuring a Service Dependency	4
Finding the Service Names	5
Configuring up the Dependency	7
Contact	9

Configuring a Service Dependency

If Salto is integrated with Protege GX, it is important that the Salto Service is started before the Protege GX Update Service. When a computer is turned on, services are started in a particular order and in some cases this order can cause databases to become out of sync.

To ensure that this does not happen, a service dependency can be set up from the registry.

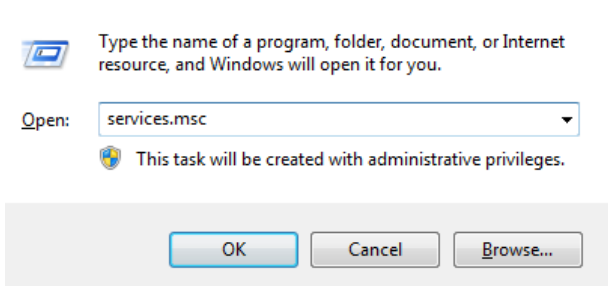
A Salto character limit of 16 for user names and 24 for door names should also be enforced.

Finding the Service Names

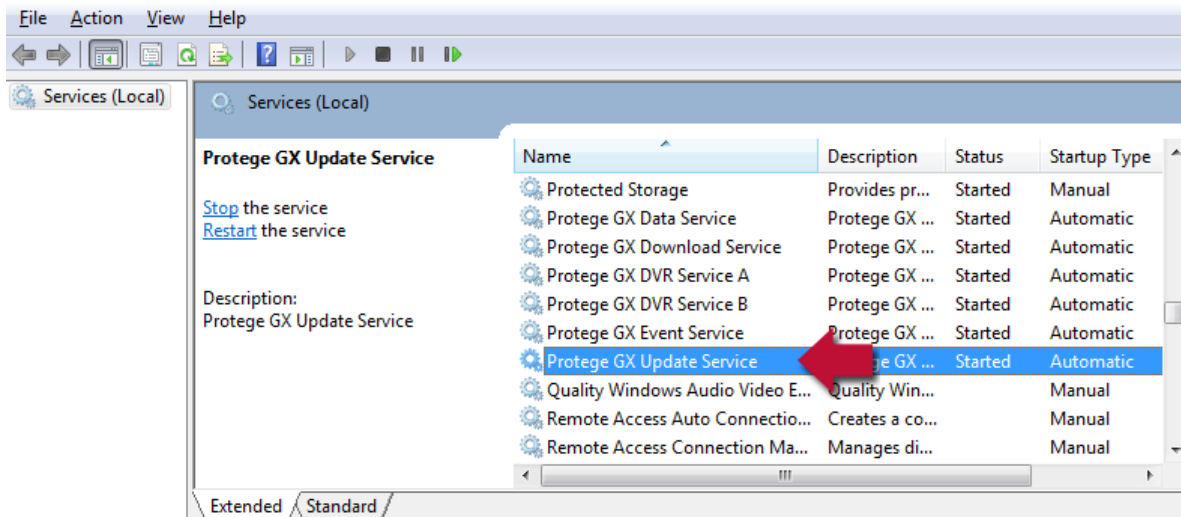
Before a dependency can be set up, the relevant service names must be found.

To locate the Protege GX Update Service name:

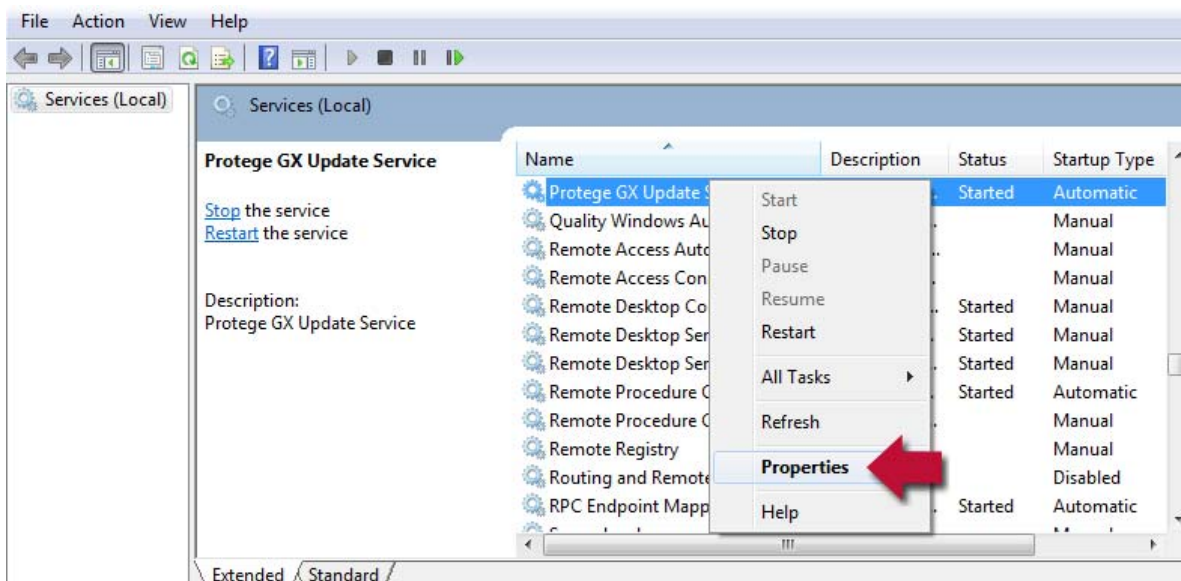
1. Press the **Windows+R** keys to open the **Run** dialog
2. Type **services.msc** into the search bar and press **Enter**



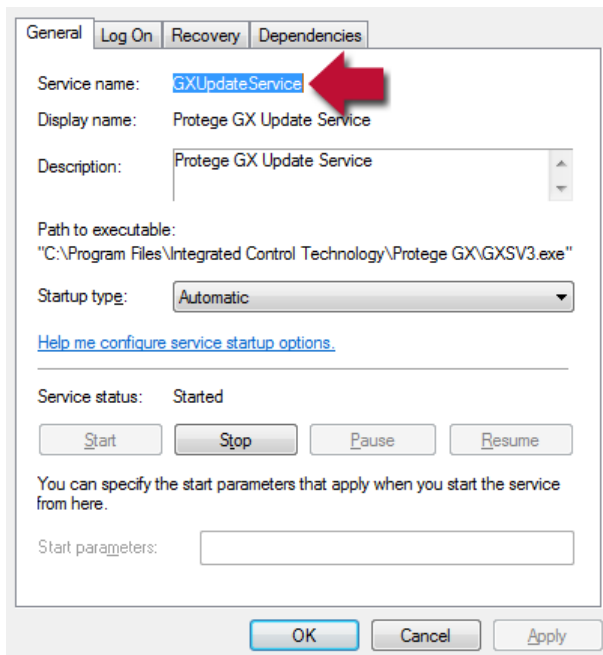
3. Navigate through the list of services and locate the **Protege GX Update Service**



4. Right click the service and select **Properties**



5. The **Service Name** is located at the top of the General tab. Make a note of this



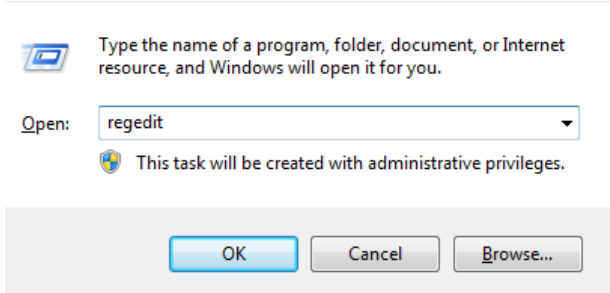
6. The same steps can be followed to find the Salto service name

If the full version of Salto is used, find the service name of **Salto Service RW** service and if the demo version of Salto is used, find the service name of **Salto Service RW Demo** service.

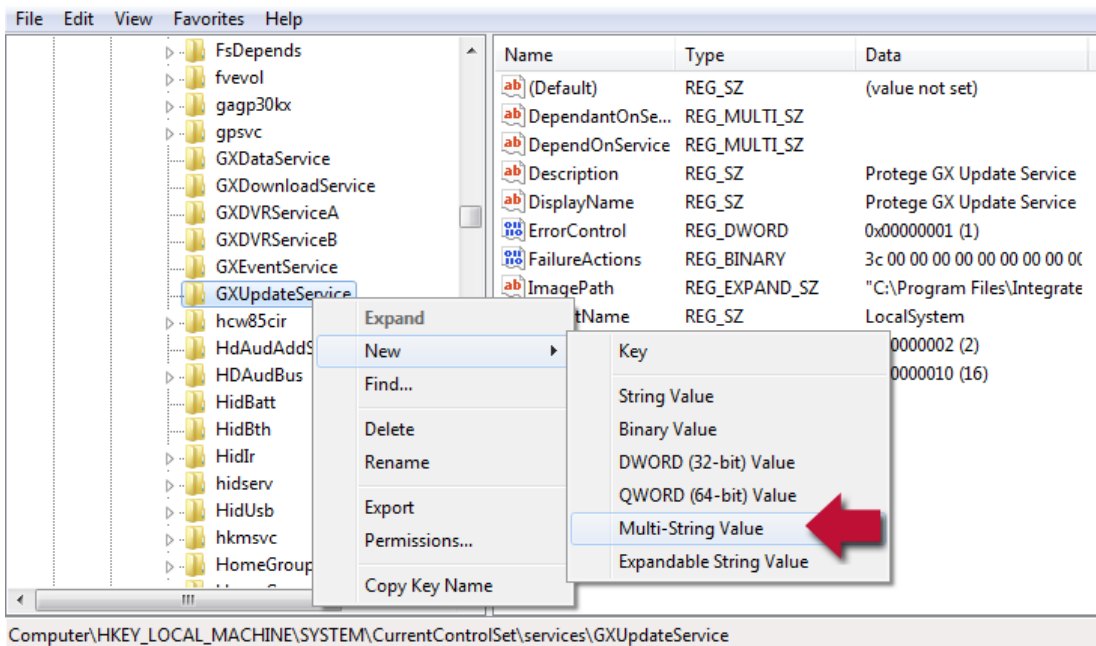
Configuring up the Dependency

Before applying this workaround, it is advised that the registry is exported to an external device as serious problems may occur if the registry is modified incorrectly.

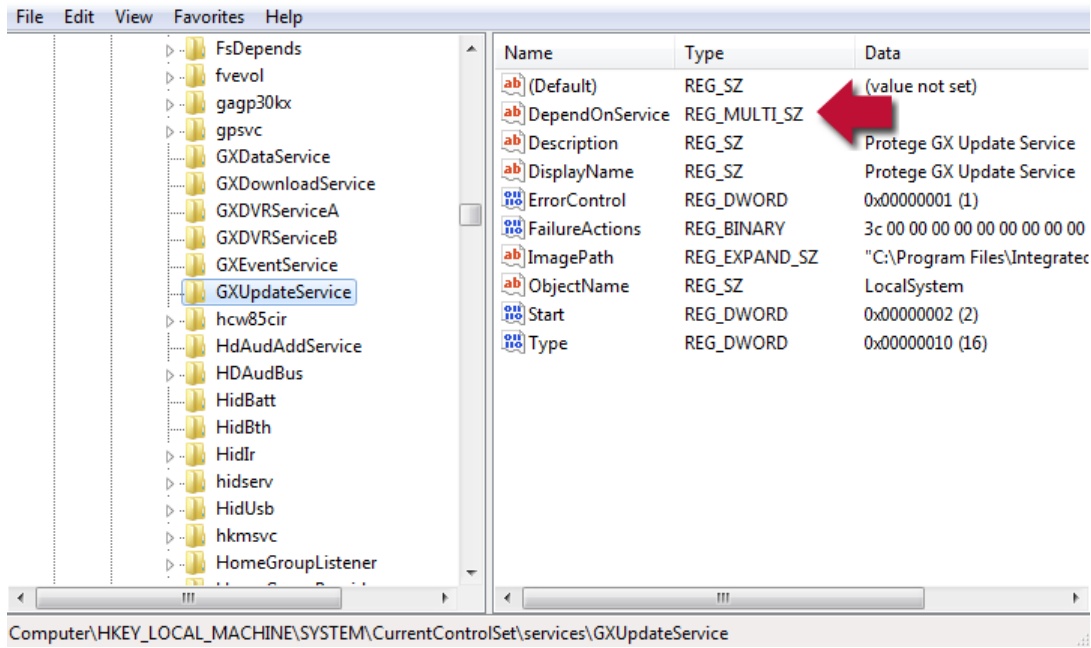
1. Press the **Windows+R** keys to open the **Run** dialog
2. Type **regedit** into the search bar and press **Enter**



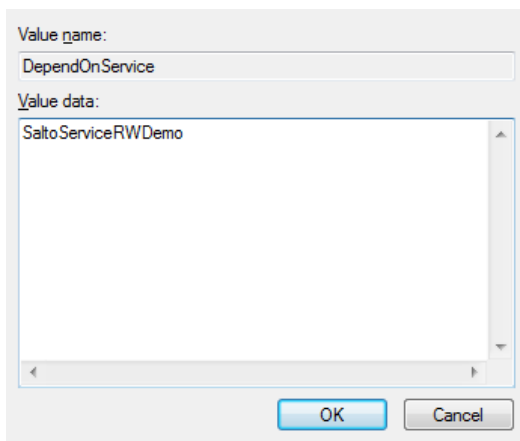
3. Once the registry is open, follow this path:
`HKEY_LOCAL_MACHINE\SYSTEM\CurrentControlSet\Services\`
4. Locate the **GXUpdateService**
5. Right click the service and select **New | Multi-String Value**



6. Name the new value **DependOnService**



7. Double click the **DependOnService** value and enter the Salto service name into the **Value Data** field



8. Click **OK**

9. Close the registry editor

10. Restart your computer

Contact

Integrated Control Technology welcomes all feedback.

Please visit our website (<http://www.ict.co>) or use the contact information below.

Integrated Control Technology

P.O. Box 302-340
North Harbour Post Centre
Auckland
New Zealand

11 Canaveral Drive
Albany
North Shore City 0632
Auckland
New Zealand

Phone: +64-9-476-7124

Toll Free Numbers:

0800 ICT 111 (0800 428 111) - New Zealand

1800 ICT 111 (1800 428 111) - Australia

1855 ICT 9111 (1855 428 9111) - USA/Canada

Email: sales@incontrol.co.nz or support@incontrol.co.nz

Web: www.ict.co



Integrated Control Technology Limited

11 Canaveral Drive, Albany, Auckland 0632

P.O. Box 302-340, North Harbour, Auckland 0751, New Zealand

Email: support@incontrol.co.nz **Phone:** +64 (9) 476 7124 **Fax:** +64 (9) 476 7128

Designers & manufacturers of integrated electronic access control, security & automation products.

Designed & manufactured by Integrated Control Technology Limited.

Copyright © Integrated Control Technology Limited 2003-2011. All rights reserved.

www.incontrol.co.nz

Disclaimer: Whilst every effort has been made to ensure accuracy in the representation of this product, neither Integrated Control Technology Ltd nor its employees, shall be liable under any circumstances to any party in respect of decisions or actions they may make as a result of using this information. In accordance with the Integrated Control Technology policy of enhanced development, design and specifications are subject to change without notice.