



Red Stag Timber & ICT

Sawmill gets cutting-edge security treatment.

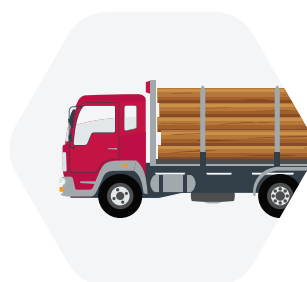
Project overview.

Red Stag Timber, near Rotorua, New Zealand, is the largest structural timber sawmill in the southern hemisphere. With timber sourced from the region's renewable plantation forests, Red Stag Timber has produced sustainable, premium quality structural timber for domestic and export markets for over 80 years. After growing to over 300 staff and more than 1500 contractors that operate across the 75-hectare site, Red Stag Timber looked to ICT Partners Nutech Security for a better security and access solution.



Location.

Rotorua, New Zealand.



Industry.

Forestry.



Integrator.

Nutech Security.



Users.

2,300



A closer look.

“ When deciding on ICT over other security systems, I was told, ‘You won’t regret it’, and I haven’t ”
- Tim Bealing, Environmental and Security Coordinator at Red Stag Timber

Before:

- > Legacy system that struggled to add users and expand alarms
- > Lack of reliable and flexible data reporting
- > Expansion limited by difficult to configure hardware

After:

- > Future-proofed Protege GX system that is easy to scale and maintain
- > Live install on a large-scale industrial site to minimize disruption
- > Custom floor plans provide instant visual context



The story.

Faced with an archaic system that was proving hard to expand, lacked variety, and had become cost prohibitive to maintain, Red Stag Timber were faced with an unenviable task – to replace a live security system on a large industrial site with no stoppages.

In consultation with local integrators Nutech Security, a two-part plan was made to deliver a unified solution that would provide expandable monitoring capabilities, and secure but flexible access.

Tim Bealing, Environmental and Security Coordinator at Red Stag Timber, has been in the security role for over a decade, and recalls the moment he decided on ICT over other security systems. “Nathan from Nutech told me, ‘You won’t regret it’, and I haven’t.”

Products & Services.

- > Protege GX
- > tSec readers and keypads
- > Data Sync Service
- > Protege Mobile App
- > Video Management System Integration
- > Armor IP monitoring
- > 4G Cellular Modem backup
- > DIN Rail Enclosures
- > Automatic License Plate Recognition
- > Custom Floor Plans
- > Programmable functions



The entire process was completed in under two years without ever causing any stoppages or issues.



- **Tim Bealing, Environmental and Security Coordinator at Red Stag Timber**

A plan for progress.

Bealing explains that the two main functions required of the system at Red Stag Timber dictated how the install would move. “We need secure but flexible access control, and to monitor our fire detection systems and other alarms across the site.”

“We started with the access and went through one door, or gate, at a time. It was a simple matter of changing the readers and reader expanders and adding controls.”

Nutech Security did the hardware install, and Bealing followed behind with the programming. “I learned quickly as the system is quite easy to program, and it meant we got things done a lot quicker, so it’s a good partnership”, he says.

Following this, was the replacement of the alarm monitoring and updating the reporting systems – a simple job thanks to Protege GX. Despite the complexities of working on a large, live site, Bealing says, “The entire process was completed in under two years without ever causing any stoppages or issues.”

Programmable functions ease pressure.

Looking for more customization, Red Stag uses programmable functions to create a better experience for staff. These trigger an action when a particular event occurs – such as automatically arming areas. But more importantly, Bealing explains they are also used to take the pressure off the onsite security team.

“If we have an emergency, the contract guard is usually on their own. I like to make things easy by giving them one thing to do. With programmable functions, they can unlock all the doors and gates that the emergency services need to get through by clicking a single icon.”

Visuals aid safety and navigation.

Red Stag has additional security staff and a team of 24/7 contract guards, so key requirements of the new system were to provide visual functionality and be simple to manage. Protege GX, with its custom floor plans, ticks both boxes.

“Using an aerial photo as a map base makes it very visual so it’s easy for them to see exactly where something’s going on. The interface has icons for doors and smoke detectors and all sorts of things. We can drill down and see exactly where an alarm is going off,” says Bealing.

“Protege GX is so easy to manipulate, the team can zoom in on any area. If it’s a smoke detector, they’ll see a flashing icon of a smoke detector, or they can right-click to open a door. Since it’s based off a map, there’s no confusion, they don’t even have to think about where they are.”

In a sawmill, the constant danger of fire means safety is paramount. According to Bealing, “We have Pertronic panels and the most modern fire systems that you can buy these days.” Relays allow an interface with Protege GX that gives the onsite security an early heads-up. “If a panel activates, or something was to catch fire, they have the information to go to the place that’s causing the issue or even direct the fire brigade there,” says Bealing.



Access in all environments.

In large-scale industrial environments, it's crucial that security always knows exactly who is on site. ICT tSec readers with keypads help enable this with visitors in the middle of the night who use a PIN to get in and out – such as a husband or wife who drops off dinner for a nightshift worker.

“As you can imagine, about half of our tSec readers are outside in the sun and rain – in all sorts of environments. I haven't had a failure yet, which is great,” says Bealing.

“We also use Protege GX to secure mobile plant on site. Using access levels tied to training and inductions, I can control the key lockers where the harness and key for a vehicle are stored. And I add reminders and an expiry to the access level for the appropriate time to meet health and safety requirements.”

Reliability, reporting, & remote management.

When asked to compare Protege to his previous security experience, Bealing raves, “The thing I like most about the new ICT system is its robustness. The server has proved to be extremely reliable; it just keeps on going and going. Nothing ever goes wrong in the middle of the night like it used to.”

“In Protege, the reporting is very, very flexible,” Bealing explains. “I get notified if someone goes somewhere they are not supposed to go with email-on-event, and I've also automated daily reports emails. As a large company with a lot of staff, the Red Stag management require regular reporting. These are all different in style, but I can find a report to match each request.”

Being easy to remotely manage is another real positive,” says Bealing. “The guards use the Protege Mobile App all the time for opening gates, or to provide access for people that turn up without a card. And I can log in from anywhere in the world and do what I need to do.”

Technology for the future.

Red Stag takes full advantage of ICT's use of open technology to integrate with multiple systems. Bealing says bringing Hanwha Vision cameras into Protege GX using the Wisenet Wave Service has many uses including viewing a camera at a gate, or door-forced alert.

“If you need to check the history, if there's a camera assigned to that door it brings up the video for a quick and easy way of finding out what went wrong. These pop-ups are also handy for guards to instantly see an event like a gate that's open too long. And, in fact, it can help to actually catch a perpetrator in the act.”

Looking to the future, Bealing explains how they have taken this a step further and now also integrate their VMS with Automated License Plate Recognition (ALPR). “This gives us the benefit of better security and improved access. Only registered trucks can enter, and Protege GX makes it just easy to manage credentials for ALPR as physical cards.”



The outcome.

Thanks to the technology and hardware from ICT, Red Stag now has a solution that meets the varied needs of a large industrial site. The use of automation, visual aids, and remote operation frees up Tim Bealing and his security team so they can focus on other tasks, knowing that they have a safe, secure site.

Tailormade for expansion.

Whether it's wireless locks for staff lockers, or adding to the monitoring capabilities at Red Stag, ease of expansion was something else Bealing was impressed with. "Once the bones of an ICT system are in place, anyone can make use of it and tailor it to your own needs."

"As a large, modern sawmill, there's always more instrumentation you may want to monitor or put an alarm on. Protege GX makes this so easy to do. Thanks to the modular way it's built, you can add an expander to a controller, no problem at all. Just plug it on a DIN rail and away you go." He also keeps the firmware and software up to date, "just to make sure we've got the cutting-edge technology."



The thing I like most is nothing ever goes wrong in the middle of the night like it used to.

- Tim Bealing, Environmental and Security Coordinator at Red Stag Timber



About ICT.

Founded in 2003 by Hayden and Rachael Burr, ICT began with a focused vision to provide innovative and easy-to-use electronic access control and security solutions. Over 20 years later, tens of thousands of companies worldwide use ICT products and systems every day, and our vision remains steadfast and engrained in all we do.

With headquarters in Auckland, New Zealand, we have a global presence and an international reach. Offices in Denver (USA), Toronto (Canada), Melbourne (Australia), the United Kingdom, and Hong Kong, provide full local sales, support and service to our clients and partners around the world.

Innovation is in our DNA.

With more than 40% of our staff dedicated to research and development, innovation is a core part of the ICT DNA. When you invest in an ICT solution, you can rest assured that your investment is protected by the best in the industry.

One solution, maximum value.

Our use of open technology allows our products to integrate seamlessly with your existing systems, providing a comprehensive solution that adds value to the infrastructure investments you already have on site.

From design to dispatch.

100% of the ICT products designed and manufactured in New Zealand at our state-of-the-art purpose built premises are subject to rigorous testing standards to ensure superior quality.

This is all backed up by sales, support, and training, and we offer a 5-year warranty across the DIN Rail range for our ICT Dealer Network Members, providing the perfect solution for your next project, regardless of scope.



Designers and manufacturers of integrated electronic access control, security and automation products. Designed & manufactured by Integrated Control Technology Ltd. Copyright © Integrated Control Technology Limited 2003-2024. All rights reserved.

Disclaimer: Whilst every effort has been made to ensure accuracy in the representation of these products, neither Integrated Control Technology Ltd nor its employees, shall be liable under any circumstances to any party in respect of decisions or actions they may make as a result of using this information. In accordance with the Integrated Control Technology policy of enhanced development, design and specifications are subject to change without notice.

www.ict.co